

AUTHORISED LAY MINISTRY



COURSE PROSPECTUS

PREFACE

I've been involved in ALM schemes of one sort or another since my own days as a parish priest in Rotherham in the 1990s. The take-off of interest in such schemes in more recent years here in the Diocese of Manchester has been a marvellous sign of how the Holy Spirit is equipping men and women for service and ministry in the Church.



I can promise anyone interested in this scheme that any such training will be demanding and stretching but that it will inevitably draw you deeper into Christ. You will learn from each other as well as from those charged with leading the course. You will grow in knowledge, in experience and in confidence.

To put it more bluntly you'll be growing more closely into the likeness of Christ for which you and all of us are destined.

Yours ever,

The Rt Revd Dr David Walker
Bishop of Manchester



CONTENTS

General Information

Authorised Lay Ministry	1
Course Aims, Goals and Expectations	2-3
Course Outline and Key Dates	4-5

Core Leadership Module

Learning Goals and Session Outlines	6-7
Venues, Dates and Tutors	8-9

Ministry Training Electives

Introduction	10
Children and Families	11-14
Community and Social Outreach	15-18
Digital Church and Online Media	19-21
Ecology and Creation	22-24
Mission and Evangelism	25-26
Parish Admin, Finance and Governance	27-30
Pastoral Outreach and Listening	31-34
Prayer and Spirituality	35-38
Urban and Estates	39-42
Worship and Liturgy	43-46
Youth Work (Plus Specialism)	47-49

Frequently Asked Questions

Further Info and How to Apply

GENERAL INFORMATION

Authorised Lay Ministry

What is an Authorised Lay Minister?

Authorised Lay Ministers (ALMs) are lay people active in church life, who have been identified by their parish as having a particular gifting, vocation or calling to lay leadership, i.e. those called to work collaboratively alongside their incumbent and wider ministry teams with a distinct focus on growing, nurturing and serving the wider parish community.

ALMs are nominated by their incumbent and PCC for training in line with their parish Mission Action Plan (MAP) and diocesan selection criteria. Once trained they are authorised by the Bishop of Manchester to carry out a mutually agreed ministry role back within their local parish context. An ALM's authorisation lasts for 3 years after which time it can be reviewed, updated and renewed.

How are ALMs nominated?

Authorised Lay Ministry is based on a collaborative model of ministry and is therefore not about any one person's desire to serve or minister. ALMs are authorised to work collaboratively as part of the wider ministry team, in a specific local context and with a mutually agreed ministerial role description. As such, any nominations for ALM must meet the diocesan selection criteria, align with the parish Mission Action Plan (MAP) and represent the expressed desire of the wider parish community. This is why it is important that the incumbent, individual and PCC discern and respond to God's call together.

For more information on nominating and selecting an ALM please see *the* [ALM Handbook for Clergy and PCCs](#).

Is lay ministry training only for ALMs?

In line with The Great Commission (Matthew 28:19-20) and as part of setting God's people free, **all lay ministry training electives will now be open to all lay people in the diocese**. Authorised Lay Ministry will remain as a distinct pathway (with additional application and training requirements, etc.) but it will no longer be the only route available for lay people wanting to access training to develop their gifts and calling to lay ministry.

There will be a simplified application process for general applications but this will still require a recommendation from an appropriate parish representative. Post training, individuals will be commissioned locally and responsibility for their ongoing care will remain under the local parish who will be responsible for ensuring that appropriate safeguard training and DBS checks are in place as standard. For more information please see [the diocesan website](#).

GENERAL INFORMATION

Aims, Goals and Expectations

Course Aim

To empower, enable and equip lay leaders to become courageous whole life disciples capable of ministering effectively and collaboratively in our shared mission of growing, nurturing and serving our local churches, parishes and communities.

Course Goals

- ♦ To provide participants with a safe and unique learning environment where they can develop and grow alongside fellow Christians from a variety of church traditions and backgrounds.
- ♦ To empower participants to develop their calling and gifts as lay leaders and to deepen their ongoing journey of faith as whole-life disciples in the everyday stuff of life *#MoreThanSunday*.
- ♦ To enable participants to grasp our Great Commission to mission and the knowledge and skills they will need to be able to work effectively, courageously and collaboratively as ministers in their own local contexts and frontlines.
- ♦ To equip participants with the tools they will need to grow and thrive and the resources required to remain fruitful and sustainable.

Course Expectations

Attendance

To be considered for commissioning all participants must maintain a minimum attendance rate of 75% during both the Core Leadership Module and their Ministry Training Elective. This is to ensure that a base level of training has been met and that all participants are fully equipped and ready for authorisation.

Linkwork

To help participants get the most out of the Core Leadership Module they will be given linkwork to complete between each of the sessions. The linkwork will usually include a few simple questions to think about or some basic preparation work for the next session. Each linkwork is designed to take no longer than 20-25 minutes.

Learning Journal

During the course we encourage all participants to keep some form of learning record or reflective journal. This is intended to take no longer than 15-20 minutes after each session and is part of developing the skills of reflective practice. Participants will be given further support and guidance on this and will not be asked to share or submit their journals.

Reading

There is no expectation for course participants to do lots of reading. However, for those wanting to delve a little deeper there will be suggested resources and recommended reading lists provided on both the Core Leadership Module and during their Ministry Training Elective. Participants will also be given full access to the ALM borrowing library at Church House.

Learning Task

As part of the Ministry Training Elective all participants may be given the opportunity to prepare and submit a short task set by the tutor. This could be a short book review, a presentation or a simple task related to that ministry area. Guidance and support for this will be provided.

Parish Visitation(s)

As part of reflective practice and personal development we ask that all participants arrange at least one parish visitation during their training period. This tends to work best if it is to a parish that is different from their own context in terms of tradition and practices. Guidance and support on this will be provided.

Diocesan Vision and Mission Goals

As part of supporting our 2030 vision, the ALM course is also underpinned by our wider diocesan vision and mission goals.

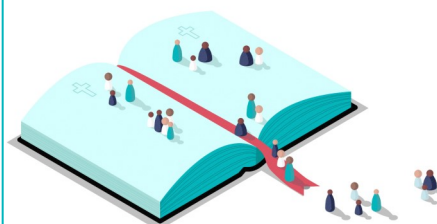
OUR VISION

To be a worshiping, growing and transforming Christian presence at the heart of every community.

Growing – a Church for everyone



Nurturing – a Church where everyone can explore their faith and discipleship



Serving – a Church which leads the way in every local community



GENERAL INFORMATION

Course Outline and Key Dates

The ALM training course is broken down into three terms that run each year from January to September. More specific details on the Core Leadership Module and Ministry Training Electives can be found later in the prospectus.

Course Induction

Saturday 14 January, 10am-1pm @ online Via Zoom

A chance for course participants and their supporting ministers to meet others on the course, including Core Leadership Module tutors, Ministry Elective tutors and other course support staff.

Core Leadership Module

The Core Leadership Module will run online between January and Easter with 3 attendance options available. Course participants will be asked to choose their preferred venue on initial application.

Safeguarding Training

Choice of Saturday 4, 11 or 18 March, 9.15-10.45 @ online Via Zoom

This compulsory training will focus on our common responsibility to safeguard children, young people and vulnerable adults. It will also explore the ways in which ALMs are part of creating church environments where children and young people are nurtured and protected; and where all people, especially those who may be vulnerable for any reason, are able to worship and pursue their faith journey in safety.

Summer Conference

Saturday 15 July, 10am-3pm @ Bolton Road Methodist Church, Bolton Road, Bury BL8 2NZ

Every year we offer the opportunity for course participants and their supporting ministers to gather with the wider ALM community to focus on a common goal or topic, often related to collaborative ministry.

Ministry Training Elective

From Easter to June, course participants will complete their chosen Ministry Training Elective. There are currently 11 electives available and further details on each of these can be found later in the prospectus.

Ministry Role Descriptions

From July, course participants will be asked to work alongside their supporting minister to update and finalise their ALM Ministry Role Description. This must be agreed and approved by the PCC before the Service of Authorisation at Manchester Cathedral in September.

Retreat Day

Saturday 02 September, 10am-2pm @ The Nazarene Theological College, Dene Road, Didsbury M20 2GU

In preparation for authorisation and commissioning we invite all new ALMs to a led retreat day. This is the final step before authorisation and has a focus on exploring some of the spiritual tools and practices that can help us to connect and find intimacy with God. Prayer support is available throughout the day and there will also be shared times of worship, prayer and communion.

Service of Authorisation

Saturday 23 September, 2.30-4pm @ Manchester Cathedral

This service of authorisation is led by the Bishop of Manchester. Following a time of worship, prayer and committal, it culminates with the final commissioning of the ALMs to their parish ministries. This is a wonderful time of celebration and a fantastic opportunity to invite close friends, family and those that have shared the

Application Closing Dates

As the ALM course begins in January with the Core Leadership Module, the application **closing date for new ALM Applications will be Sunday 8 January 2023.**

For general applications and existing ALMs who want to access further training, the application **closing date will be Sunday 12 March 2023.**

Please note: All dates and venues are subject to change. We will do our best to inform participants of any changes but further travel or a move to online training may be required.

CORE LEADERSHIP MODULE

Learning Goals and Session Outlines

Learning Goals

- To understand more about the context of Authorised Lay Ministry (ALM) and where it fits in both locally, in relation to our diocesan vision, and nationally in relation to the work of Setting God's People Free.
- To unpack some of the current challenges and changes we are facing in being Church for a Different World and how God is calling us as lay leaders to respond and lead others towards new and exciting opportunities.
- To explore what it means to be a Christian leader and how we can play our part in forming whole life discipleship making cultures that are faithful to biblical values, principles and practices.
- To develop practices for sharing our faith with others and a solid biblical understanding of what it means to get our parishes inspired for mission; including how we can resource this in line with our parish Mission Action Plans (MAPs) and the wider diocesan mission goals.
- To identify practices, resources and Christian disciplines that will help to sustain and grow our personal faith, Christian ministry and ongoing discipleship journey.

Session Outlines

Session 1: Setting the Scene

This opening session will be a chance to meet others on the course, to share something of the journey that brought us to this point and to gain a wider understand of where Authorised Lay Ministry sits both locally and nationally.

Session 2: Being Disciples and Making Disciples

In this session we will look at Jesus' model for discipleship and explore how we can go about creating whole life discipleship making cultures in our own parish contexts and frontlines.

Sessions 3: The Call to Christian Leadership

What does it mean to be called in to Christian leadership? What can the bible teach us about what it means to live out this calling faithfully? In this session we will unpack these questions and also do some reflection around our own leadership.

Session 4: Church for a Different World

We live in challenging times but also in times of great opportunity. This session will unpack some of those challenges but will mainly focus on how we can all play our part in making sure that the we become Church for a Different World.

Session 5: Leading Through Times of Change

The focus here will be on how we can better understand the process of change so that we can support our congregations to embrace and grow through the current changes and shifts we are currently facing, locally, nationally and globally.

Session 6: Sharing Faith and Inspiring Mission

In this session we will work towards developing a solid biblical understanding of why mission matters and look practically at how we can go about sharing our faith with others. We will also explore how we can inspire, support and resource this in our own local parish contexts and frontlines.

Session 7: Collaborative Ministry

Paul's writings on The Body of Christ (1 Corinthians 12) remain as a solid biblical model for collaborative Christian ministry. In this session we will continue to unpack what this means in practice and explore how we can all improve the ways that we work and minister together in our local parishes.

Session 8: Sustaining and Growing

In our final session together we will focus on the Christian practices, resources and disciplines that will ensure that our relationship with God thrives and that our ALM ministry remains healthy and fruitful.

CORE LEADERSHIP MODULE

Venues, Dates and Tutors

The Core Leadership Module will run online between January and Easter with three course attendance options available. Applicants will be asked to choose their preferred option upon application.

Bolton: Tuesday Evenings

Bolton Parish Church, The Old Grammar School, Silverwell Street, Bolton BL1 1PS

Tuesdays, 6.45-9pm

Session 1: 17 Jan
Session 2: 24 Jan
Session 3: 31 Jan
Session 4: 07 Feb
Session 5: 14 Feb

Half-Term

Session 6: 07 Mar
Session 7: 14 Mar
Session 8: 21 Mar



Tutor
Libby Greenhalgh

Ordinand



Tutor
Revd Paul Hardingham

Retired Clergy

Manchester: Saturdays

St Andrews, Merton Drive, Droylsden, Manchester M43 6BH

Saturdays, 10am-3pm

Sessions 1-2: 21 Jan
Sessions 3-4: 04 Feb
Sessions 5-6: 18 Feb
Sessions 7-8: 18 Mar



Tutor
Jamie Mackenzie

Local Ministry Officer

Online via Zoom: Thursday Daytime

Online Via Zoom

Thursdays, 11-1

Session 1: 19 Jan
Session 2: 26 Jan
Session 3: 02 Feb
Session 4: 09 Feb
Session 5: 16 Feb

Half-Term

Session 6: 09 Mar
Session 7: 16 Mar
Session 8: 23 Mar



Tutor
Revd Liz Rowles

Incumbent at Heaton's Team



Tutor
Bev Angier

Focal Ministry Officer

MINISTRY TRAINING ELECTIVES

Introduction

Ministry Training Electives will run between April and July at a variety of venues around the diocese. There are currently 11 electives available. For more information on each elective please see the following outlines.

Ministry Electives

- * Mission and Evangelism
- * Ecology and Creation
- * Children and Families
- * Pastoral Outreach and Listening
- * Urban and Estates
- * Parish Admin, Finance and Governance
- * Community Outreach and Social Action
- * Youth Work (Plus Specialism)
- * Worship and Liturgy
- * Prayer and Spirituality
- * Digital Church and Online Media

Application Closing Dates

New ALM Applications – Sunday 8 January 2023

Existing ALMs doing further training – Sunday 12 March 2023

Please note: We do our best to make training accessible to everyone but if there are not enough candidates to run selected venues then further travel may be required. Some sessions may also be delivered online via Zoom.

General Training Pathway

Please note that all of the Ministry Training Electives offered on the ALM programme are also open as stand-alone courses to any lay people wanting to develop their call and gifting to Christian ministry and service. For more information on this please see our section on [General Lay Courses](#).

CHILDREN AND FAMILIES MINISTRY

Important Information

In previous years we have taught the children's and youth elective courses separately, however this year we are looking to deliver core content appropriate for both children's and youth leaders, along with separate sessions that cover more specific training for the distinctive age ranges.

Learning Goals

- ♦ To explore and learn more about the social development of children and young people and its impact on our ministry and work with them.
- ♦ To explore and understand some of the key principles of relational children's and youth work so that participants can contextualise these to their local parishes, projects and communities.
- ♦ To make space for participants to dream and get excited about potential programmes of children's and youth work applicable to their context, and then be able to identify key resources that would enable them to develop and deliver these.
- ♦ To equip and train participants in specialist 'bolt on' areas of children's and youth work, such as mental health, messy church, faith development and schools work.
- ♦ To ensure that all participants are up to date with current guidelines and best practice in youth and children's' work.
- ♦ To equip participants in rethinking their contextual approach to the 'departure' after confirmation and secured secondary school places.

Course Delivery and Venues

Due to the new structure of this dual elective we will be delivering the sessions across one weekend. Dates and venue for this weekend will be confirmed soon but are likely to be during April/May 2023.

This will create space to learn together and also the opportunity to meet in separate elective groups too. A weekend also creates opportunities to share experiences, resources and best practice with others attending.

There will also be 2 additional evening meetings, one prior to the weekend and one after the weekend with dates and venues tbc.

Tutor

We are welcoming our new Children's Officer at the beginning of December and shortly after that time we will be able to release a detailed overview of the course content. This will include both the joint teaching content and the specific elective course content.

In the meantime, for more information elective please contact:



Canon Susie Mapledoram
Diocesan Youth Work Officer

E: SusieMapledoram@manchester.anglican.org

Going Deeper

If you would like to know a little bit more about this elective and what it will be covering then please feel free to check out the following books and resources:

Books

Ivy Beckwith and David Csinos, Children's Ministry in the Way of Jesus

Ivy Beckwith, Post Modern Children's Ministry

Joyce Mercer, Welcoming Children

John Westerhoff, Will Our Children Have Faith (Revised Edition)

Rebecca Nye, Children's Spirituality

Mark Griffiths, Changing Lives: The Essential Guide to Ministry With Children and Families

Grove Booklets: <https://grovebooks.co.uk/search?q=children>

Websites

Faith at Home: <https://www.churchofengland.org/faith-action/faith-home>

A national campaign that builds on the work of Growing Faith and Everyday Faith to support the faith development and pastoral care of children and young people.

National Churches Growing Faith (Leaflet): <https://tinyurl.com/y5svjjek>

Diocese of Manchester Children and Family Resources (Facebook Group)
<https://www.facebook.com/groups/236487611079373>

Important Information

In addition to the standard application process, all applicants for this elective will also be invited to have an informal phone conversation with the course tutor prior to being offered a place on the course.

CHILDREN and FAMILIES

Jenny's ALM Story

Why I did the course

I'm a mum of two young children but had been on the fringes of our church's children's ministry for a number of years. As was the case for many, the pandemic and particularly the lockdowns made me re-assess my role in church. So, when we returned I spoke to my vicar about getting more formally involved in the children and families work and we decided that the ALM course was the best way forwards.

How I found the course

I was initially apprehensive about doing the course as it had been a good while since I had done any training or learning like this! However, there was no need to be nervous. The tutors are fantastic and you're never left on your own to struggle with anything. There's always plenty of time to ask questions and to explore things together. It was also interesting and inspiring to hear from my fellow course participants what was going on in their churches.

What I've been doing since

It was always the plan that I would get involved with re-starting the pre-school worship service that had stopped just before the pandemic. Coming in to the course we had been thinking about just keeping the same outline and format for the service which had been used for around 20 years! However, the ALM course gave me new ideas and confidence, so I actually redesigned the service which has since been relaunched with great feedback from all involved. Bringing the knowledge, ideas and experiences shared on the course, I've also been involved with supporting the rest of the ministry team in designing and leading a new monthly intergenerational service.

My advice to those considering the course

Firstly, before you start the course make sure that you have loads of good spiritual and practical support in place. The course can be demanding in terms of time but also spiritually as you are encouraged to reflect and think deeply about your own ministry and church context. Secondly, I'd say take full advantage of the wealth of experience available to you from the tutors, ALM Chaplains, fellow participants and from the wider ALM community on the ALM Facebook page! Finally, I'd say enjoy it! Be open minded about other traditions and experiences and you'll be rewarded with a fantastic experience.



Jenny Durber

Children and Families ALM at St Michael, Flixton

COMMUNITY OUTREACH AND SOCIAL ACTION



This elective is delivered by our partners at Greater Together Manchester (GTM). GTM is a joint venture between the Diocese of Manchester and Church Urban Fund and is often termed the social action vehicle for the Diocese of

Manchester. GTM's vision is to see people and communities all over the Diocese of Manchester flourish and enjoy life in all its fullness. We support churches to be a truly transforming Christian presence in every community.

Learning Goals

- ♦ To give participants an understanding of the major challenges facing communities in the UK today, and how the church can work with other partners to respond appropriately.
- ♦ To enable participants to develop their understanding of community outreach and social action as mission, and why engaging in these activities is a vital part of the Christian Faith.
- ♦ To understand how engaging in community outreach and local social action can lead to church growth.
- ♦ To equip participants with the confidence and skills to grasp opportunities for community outreach and social action in their own locality and context.

Course Delivery and Venues

Sessions will primarily be delivered in person on Saturdays. The venues will be confirmed once we know where participants are based. Some travel may be required to visit community projects around the diocese.

Sessions

The first half of the elective will examine the major issues facing our communities locally, regionally and nationally, using recent case studies to look how churches have responded.

Session 1: Introduction to Community Outreach and Social Action

W/c 11 April (tbc), 6.30-8.30pm @ Online via Zoom

Sessions 2-4: Big Topics (Part 1) Food Insecurity; Homelessness and Housing; Loneliness and Isolation

Saturday 22 April, 10-3pm @ Venue tbc

Sessions 5-7: Big Topics (Part 2) Migration and Sanctuary; Financial Inclusion; Mental Health and Trauma

Saturday 6 May, 10-3pm @ Venue tbc

The second half of the elective will aim to inspire participants and show them what is possible, bringing in the theology of social action and community outreach, the context of our communities, models of community work and the link between social action and church growth.

Session 8: Project Visits (Part 1)

Saturday 20 May, 10am-3pm @ Venues tbc

Session 9: Project Visits (Part 2)

Saturday 17 June, 10am-3pm @ Venues tbc

Session 10-12: Responding to Your Own Context; Growing Good - Social Action, Church Growth and Discipleship; Next Steps, Action Plans and Role Descriptions

Saturday 01 July 10am-3pm @ Venue tbc

Tutor

For more information on the community outreach and social action elective please contact:



Lily Axworthy

CEO of Greater Together Manchester

E: lily@greatertogethermanchester.org

Going Deeper

If you would like to know a little bit more about this elective and what it will be covering then please feel free to check out the following books and resources:

Websites

Church Urban Fund Look Up Tool: <https://cuf.org.uk/lookup-tool>

Mapping GM: <https://mappinggm.org.uk/>

Books

BARCLAY, D. and HILHORST, S. (2019) Holy Alliances: Church-Secular Partnerships for social good. Available online.

BARNA GLOBAL. (2018) The UK Church in Action: Perceptions of Social Justice and Mission in a Changing World. PDF available on request.

CHARLESWORTH, M. and WILLIAMS, N. (2017) A Church for the Poor: Transforming the church to reach the poor in Britain today. Colorado Springs: David C. Cook

PURCELL, L. and PURCELL, S. (2016) Church of the Poor? A call to action for churches in the UK. Available online.

SPENCER, N. (2016) Doing Good: A Future for Christianity in the 21st Century. Available online.

THORLBY, T. (2017), Assets Not Burdens: Using church property to accelerate mission. Available online.

WALKER, D. (2017) God's Belongers. How people engage with God today and how the church can help. Abingdon: The Bible Reading Fellowship.

WELLS, S., Rook, R. and Barclay, D. (2017) For Good: The Church and the Future of Welfare. Canterbury: Canterbury Press.

WYLER, S. (2020) Community Responses in times of crisis: Glimpses into the past, present, and future. Available online.

COMMUNITY OUTREACH

Barbara's ALM Story

Why I did the course

The area surrounding our church is one of great diversity. There are pockets of wealth but we also have considerable areas of poverty and deprivation. We have a community centre that is used to engage with local groups and raise awareness of the church but like many we have found that numbers have dwindled post pandemic. I was looking for something that I felt would equip me with the knowledge, skills and ideas to get things back on track. So after talking to my vicar, we decided that the Community Outreach and Social Action elective would be ideal.

How I found the course

The course was thought provoking, informative and challenging, in a good way! It gave insight into what to expect when working in the community and how problems could be tackled. The Course Tutor was a wealth of knowledge and always willing to help and advise. Other guest speakers on the course also gave ideas for how to engage with the community. Overall it was a really good mixture of content and had a really practical focus.

What I've been doing since

Since doing the course I've been really busy building relationships out in the community and organising events at church and the community centre. We have done a couple of big community fundraising events and I've also been in touch with our local Rainbows and Brownies, inviting and encouraging them to get more involved in some of our church services and activities. Forming these links with the local community is an ongoing task but I now feel much more confident in doing this. For example, I have recently been in touch with our local high school, inviting them to join in putting on a local Christmas Tree Festival.

My advice to those considering the course

I would recommend this course to anyone who wants to widen links with their local parish community and be equipped in better understand and responding to social needs. Be prepared to be personally challenged as you may have to rethink some of your own ideas! But also be prepared to be excited and inspired .



Barbara Barratt

Community Outreach & Social Action ALM at St Paul,
Walkden

DIGITAL CHURCH & ONLINE MEDIA

Learning Goals

- ♦ To develop an understanding of the online world and where the Church fits in.
- ♦ To allow missional opportunities to arise from a strong online church presence.
- ♦ To create good quality well-planned content, that enhances and supports the 'in building' offerings of their church.
- ♦ To help lead missional communities to develop a broad digital presence that serves the whole community.

Course Delivery and Venues

Some sessions will be delivered in person at St John's House, Bury and others will be online via Zoom. There will be a mixture of some Saturday sessions but mainly the sessions will run on a midweek evening with times and venues tbc nearer the time. Some travel may be required to visit other parishes and projects.

Sessions

Session 1: Theology of the Online World - Linking Mission and Communication

Session 2: An Introduction to Social Media and Website Best Practice

Session 3: Practical - Filming and Editing

Session 4: Online Worship

Session 5: Youth Work Online and Digital Safeguarding

Session 6: Building online community and pastoral care

HALF TERM BREAK

Session 7: Good Communications and Engagement

Session 8: - Our Digital Journey

Session 9: Practical - Graphics and Design

Session 10: Visit - Digital Support in Church: Serving the Community

Session 11: Overview of Digital Technology

Session 12: Next Steps, Action Plans & Role Descriptions

Tutor

For more information and details on the elective please contact:



James Newman

Diocesan Digital Communications Officer

E: jamesnewman@manchester.anglican.org

Going Deeper

If you would like to know a little bit more about this elective and what it will be covering then please feel free to check out the following books and resources:

Mark Crosby, *So Everyone Can Hear: Communicating Church in a Digital Culture*

Neil Pugmire, *100 Ways to Get Your Church Noticed*

Brady Shearer, *Pro Church Tools* - Youtube Channel

Important Information

This elective is aimed at people who already have some experience of digital and online media or are already involved in developing and supporting their churches online and digital presence. For example:

- ♦ **Setting up or being admin for a Facebook page or group**
- ♦ **Having a personal, church or professional social media profile**
- ♦ **Involvement with the church website**

To assist with pitching the course appropriately, applicants for this elective will be invited to have an informal phone conversation with the tutor before being enrolled to discuss their level of experience.

DIGITAL CHURCH and ONLINE MEDIA

Tony's ALM Story

Why I did the course

Our church had already been adopting some good practices in terms of digital media but I felt that more could be done to develop our online presence ~ to make it more of a point of contact between the church and the wider community. I was already the editor of our "A Church Near You" website and had seen first-hand the wide appeal that this platform has in generating baptism and wedding enquiries for example. This got me thinking about what more could be achieved using online media. I am not a particularly technically minded person but thought "why not give it a go" and I'm really glad that I did.

How I found the course

I found all the training to be so thought provoking and relevant. The sessions are led by personable, approachable and knowledgeable tutors who are there to guide and challenge you to think in ways that you may not have considered before. Much of the course was delivered on Zoom but there were also opportunities for onsite visits, face to face meetings ~ and with so much support and encouragement it was a joy to be involved.

What I've been doing since

Since completing the course I have been having an exciting time putting the skills and knowledge that I have gained from the ALM training into action! We are planning a parish-wide leaflet drop to promote the church and a new Alpha Course starting soon; the updated church website and social media platforms will be used to endorse and spread that message.

My advice to those considering the course

Don't hesitate! Rest assured that in signing up for this elective you will be fully supported along your learning journey with a wonderful mix of sessions shared with like-minded people; the support from everyone involved is awesome!



Tony Wood

Digital ALM at St James, Hope

ECOLOGY AND CREATION

Learning Goals

- ♦ To develop a theological understanding of creation care alongside an understanding of the current issues regarding the climate emergency.
- ♦ To identify how creation and ecology present missional opportunities for engagement in all aspects of church life, such as pastoral care and worship.
- ♦ To equip people with resources that enable them to practically engage in creation care within their own context.

Course Delivery and Venues

For ease of convenience and to reduce travel, most of the sessions will be delivered online via Zoom on a Tuesday evening. However, the elective will involve some field trip visits to some key eco projects around the diocese and a special Saturday Eco Retreat Day.

Sessions

Session 1: Introduction: Looking at Our Contexts

Tuesday 18 April, 7-9pm on Online via Zoom

Session 2: Creation, Ecology and The Bible

Tuesday 25 April, 7-9pm @ Online via Zoom

Session 3: Creation and Ecology as Mission

Tuesday 02 May, 7-9pm @ Online via Zoom

Session 4 & 5: Eco Retreat Day (SATURDAY)

Saturday 13 May, 10am-2pm @ Venue tbc

Session 6: Engaging with Children, Young People & Schools

Tuesday 16 May, 7-9pm @ Online via Zoom

Session 7: Pastoral Care, Climate Grief and the Role of Churches

Tuesday 23 May, 7-9pm @ Online via Zoom

HALF TERM BREAK

Session 8: Creation, Ecology & Worship (Joint with Worship Group)

Wednesday 14 June, 7-9pm @ Online via Zoom

Session 9: Eco Church: Process and Measurements

Tuesday 21 June, 7-9pm @ Online via Zoom

Session 10: Stepping Stones and Moving On

Tuesday 28 June, 7-9pm @ Online via Zoom

Session 11: A Rural Eco Church (Field Trip)

Tuesday 04 July, 7-9pm @ Rossendale

Session 12: An Urban Eco Church (Field Trip)

Tuesday 11 July, 7-9pm @ St Johns, Old Trafford

Tutor

For more information on the Ecology and Creation elective please contact:



Revd Grace Thomas

Vicar at Clifton and Diocesan Environment Officer

E: revgracethomas@gmail.com

Going Deeper

If you would like to know a little bit more about this elective and what it will be covering then please feel free to check out the following books and resources:

Books

Robert Bauckham, *The Bible and Ecology*

Church of England Liturgical Commission, *A Time for Creation*

John Bimson, [The Book of Job and Environmental Ethics](#) (Grove Booklet)

Grace Thomas & Mark Coleman, [Climate Action as Mission](#) (Grove Booklet)

Websites

A Rocha Eco Church: <https://ecochurch.arocha.org.uk/>

Christian Climate Action: <https://christianclimateaction.org/resources/>

Green Christians website: <https://greenchristian.org.uk/>

Diocese of Manchester, Eco Diocese: <https://www.manchester.anglican.org/>

ECOLOGY and CREATION

Matthew's ALM Story

Why I did the course

I already had an interest in ecology and wanted to particularly understand the role that churches could play in helping to fight climate change. When my vicar suggested the Ecology and Creation ALM course, it struck me as an obvious and natural fit for me and a good starting point for me to contribute more to my church.

How I found the course

It was an incredible course: fascinating and varied. The practical aspects of the course included visits to several churches to see their ecology projects, such as wild gardens, micro-forests and environmentally friendly heating options. The more reflective areas covered included the theological justification for involvement in climate action as well as topics such as eco-anxiety. I started the course because it sounded reasonably interesting and came out the other side with a genuine passion to do something to help the planet. If you have an interest in ecology, then I would strongly recommend it.

What I've been doing since

I am keen for our church to be recognised as an eco-church through the A Rocha UK scheme. This involves meeting several targets, such as reducing our carbon footprint, helping our congregation to do the same, wilding our grounds and engaging with the wider community. One of our projects is to create a wild garden in both the church grounds and beyond, with the co-operation of some of our church neighbours. I also try to ensure that a concern for the environment is a constant theme and key consideration both in the church and in our engagement with the wider community.

.

My advice to those considering the course

Climate change is the most serious problem we face as a society. As an Ecology and Creation ALM, you will be well placed to help your church do its bit to address this problem. If you have an interest in ecology and want to help your planet, as well as your church, then this is an excellent choice.



Matthew Pollard

Ecology ALM at St Paul, Monton

MISSION AND EVANGELISM

Learning Goals

- ♦ To increase participants confidence in planning for and enabling evangelism.
- ♦ To support participants in how to identify, engage and train others to get involved in evangelism.
- ♦ To develop a bespoke plan for enabling evangelism that works in the participants local context.
- ♦ To explore how to sustain this over time by embedding it into the culture

Course Delivery and Venues

This year's course will focus on delivering the new national Leading in Evangelism course (see: <https://leadinginevangelism.org/>). It will run over 3 Saturdays at different locations around the diocese plus 2 mid-week online sessions.

Sessions

Session 1: Why Lead in Evangelism?

Session 2: What Do People Believe Today?

Session 3: How Can We Discover Our Churches 'Evangelistic temperature?'

Saturday 22 April, 10-2.30 @ St John's House, 155-163 The Rock, Bury BL9 0NE

Session 4: Evangelism and Everyday Faith

Tuesday 02 May, 7-8.30pm @ online via Zoom

Session 5: Evangelism in a Post Truth World

Tuesday 16 May, 7-8.30pm @ online via Zoom

HALF TERM BREAK

Session 6: What Does God Do and What Do We Do?

Session 7: How Can We Lead The Way?

Session 8: How Can We Engage Others?

Saturday 17 June, 10-2.30 @ St Georges, 504 Broadway, Chadderton OL9 9PY

Session 8: How Do We Shape an Evangelistic Culture?

Session 9: Who Are We Hoping to Reach?

Session 10: What Will Our Starting Point Be?

Session 11: How Do We Enable Lasting Change?

Session 12: Next Steps and Role Descriptions

Saturday 01 July, 10-2.30 St John the Evangelist, 55 Church St, Farnworth BL4 8AQ

Tutor

For more information on the Mission and Evangelism elective please contact:

Fr Stephen Nolan

Team Rector at Farnworth, Kearsley and Stoneclough (Benefice)

E: stephennolan1@Live.co.uk

Going Deeper

If you would like to know a little bit more about this elective and what it will be covering then please feel free to check out the following books and resources:

St Paul's 1st and 2nd Letter to the Corinthians

Mike Larson, Practical Evangelism: Sharing the Love and Truth about Jesus is Easier Than You Think

Stephen Cottrell, From the Abundance of the Heart: Catholic Evangelism for all

David Male, The Words Out: Principles & Strategies for Effective Evangelism Today

Paul McCauley, Everyday Evangelism: Sharing the Gospel in Conversation

Jeff Vanderstelt, Gospel Fluency: Speaking the Truths of Jesus into the Everyday Stuff of Life

Reaching the Nones: <https://www.reachingthenones.org/>

Sharing Jesus: <https://www.sharejesusinternational.com/>

Sacramental Evangelism Network: <https://sacramentalevangelism.wordpress.com/>

Important Information

This elective is aimed at people who have a real heart for evangelism and want to be involved in encouraging and inspiring others to share their faith. There will be lots of interactive discussions around the background to Evangelism, why we should do it and importantly how scripture underpins our work. However, this course is particularly aimed at developing real evangelistic projects, existing or new, that will get the Good News out into our communities. As part of this, candidates will be encouraged to plan and shape projects in their own contexts alongside each other.

PARISH ADMINISTRATION, FINANCE AND GOVERNANCE

Learning Goals

- ♦ To help participants understand the importance of administration as a ministry in its own right, and the vital role it plays in supporting God's work in the parish and wider diocese.
- ♦ To enable and resource participants to feel more confident in discussing, managing, and dealing with matters of church governance, and to understand where support and assistance can be found.
- ♦ To equip participants with an understanding of how parish and diocesan finances work together to support the mission of the church as a whole.
- ♦ To highlight the value of talking about generous giving as part of the Church's mission in all its aspects, how to do fundraising well (and legally) and what support is available.
- ♦ To resource participants with the information and guidance required to manage other key parish issues such as health & safety, safeguarding and GDPR etc.

Venue

Most sessions will run online via Zoom on a Tuesday evening (with 2 exceptions) with the addition of 3 Saturdays that will be run in person at St John's House is 155-163 The Rock, Bury BL9 0NE.

Sessions

Sessions 1-3: The Ministry of Administration, The Who's Who of Church Governance and All Things PCC

Saturday 29 April, 10-3 @ St John's House, 155-163 The Rock, Bury BL9 0NE

Session 4: A Practical Introduction to Faculties and Church Law

Tuesday 02 May, 7-9.15 pm @ Online via Zoom

Session 5: An Introduction to Parish Data and Statistics

Wednesday 10 May, 7-9.15 pm @ Online via Zoom

Session 6: Looking After Your Church Building (Including a Brief Introduction to Health and Safety & Church Insurance

Tuesday 16 May, 7-9.15 pm @ Online via Zoom

Session 7: Dealing with Life Events- Births, Deaths & Marriages

Saturday 27 May, 10-3pm @ St John's House, 155-163 The Rock, Bury BL9 0NE

HALF TERM

Session 8: Introduction to Diocesan and Parish Finances

Tuesday 6 June, 7-9.15 pm @ Online via Zoom

Session 9: Introduction to Generosity and Thanksgiving, Financial Giving and Fundraising

Wednesday 14 June, 7-9.15 pm @ Online via Zoom

Session 10: Introduction to Church Communication and Publicity

Tuesday 20 June, 7-9.15 pm @ Online via Zoom

Sessions 11 and 12: Managing Demands, Expectations and Personal Wellbeing

Saturday 24 June, 10-3 @ St John's House, Bury

Tutors

For more information on the Parish Admin, Finance and Governance elective please contact:



Revd Ian Bullock

Vicar at the Benefice of Littleborough

E: rev.ian@btinternet.com

Going Deeper

If you would like to know a little bit more about this elective and what it will be covering then please feel free to check out the following books and resources:

Books

Church Representation Rules: 2022, Church House Publishing

Kenneth MacMorron, A Handbook for Churchwardens and Parochial Church Councillors

Ian Russell, The Churchwarden's Handbook: A Practical Guide

Martin Dudley, Churchwardens: A Survival Guide

John Pitchford, An ABC for the PCC: A Handbook for Church Council Members

Web Resources

Manchester Diocese: Finance Resources including Gift Aid Lite

<https://www.manchester.anglican.org/finance/>

Church Representation Rules is available as an on online toolkit for all those involved in parochial, diocesan and national Church governance.

<https://www.churchofengland.org/about/leadership-and-governance/legal-services/church-representation-rules>

The National Church: Finance, Giving and Christian Stewardship Resources:

<https://www.churchofengland.org/more/church-resources/finance-giving-and-christian-stewardship>

Pariah Resources is a site provided by the Church of England's National Stewardship and Resources team and offers over 400 pages of resources (web and pdf) to support all aspects of stewardship, administration and management in the local church: <https://www.parishresources.org.uk/>

ACAT is a charity set up to support treasurers of Christian churches and also offers an Introductory Guide for New Church Treasurers:

<https://www.acat.uk.com/>

PARISH ADMINISTRATION

Hilary's ALM Story

Why I did the course

Prior to doing the elective I was recently retired and had taken over as the parish PCC Secretary, as well as taking on some Churchwarden duties and responsibilities. I attended a Deanery Synod meeting where Jamie (Local Ministry Officer) came to talk about the role of ALMs and it was as if a lightbulb had gone off in my head. I immediately knew that this was what I was being called to do as the Parish Admin elective fitted in perfectly with my new and existing parish roles.

How I found the course

The training was invaluable, informative and interesting. I learnt about the various admin processes needed for the day today running of the Parish, like which forms to fill in (and when), how to apply for faculties and how to apply for grants. We got to meet various Church House staff who could help and support us in our roles which, amongst other things, enabled me to put faces to names. Throughout the course I also struck up new friendships with other Churchwardens and PCC Secretaries, sharing our "how we do it " hints and tips as well as swapping email addresses and phone numbers for future help, encouragement and support.

What I've been doing since

Everything I learnt on the course was needed almost immediately. Little did I know that as soon as the course ended we would be facing an Interregnum! I found every bit of what I had learnt on the course invaluable, not least being able to call on the friends I had made and being able to ask for advice or support from the contacts at Church House.

My advice to those considering the course

If your role involves anything to do with church admin, finance or governance, then this course is the one for you. Not only will it help you to offer more support to your vicar and PCC but it will also help to make your life so much easier.



Hilary Tyers

Parish Admin ALM at St James, Ashworth

PASTORAL OUTREACH AND LISTENING

Learning Goals

- ♦ To enable participants to develop their understanding of pastoral care from a Christian perspective.
- ♦ To enable participants to grasp the missional opportunities for church growth involved with pastoral care.
- ♦ To enable participants to be more confident in nurturing and caring for the people and communities around them.
- ♦ To equip participants with the pastoral skills they need to be able to serve their parish and local community.
- ♦ To make sure that participants do all the above safely and in line with current safeguarding guidelines and best practice.

Course Delivery and Venues

Sessions will be delivered at a variety of venues around the diocese including a mixture of in person and online training. Most sessions will be on a Thursday evening online via Zoom with the addition of 2 in person Saturday training days.

Sessions

Session 1: Biblical Principles of Pastoral Care

Thursday 20 April, 6.45-9pm @ Online via Zoom

Session 2: ACORN Listening (Day Course)

Saturday 29 April, 10-2pm @ St Wilfrid's, 27 Ford Lane, Northenden M22 4WE

Session 3: Pastoral Care and Life Events: Baptism and Weddings

Thursday 4 May, 6.45-9pm @ Online via Zoom

Session 4: Pastoral Care and Life Events: Funerals and Hospital Visiting

Thursday 11 May, 6.45-9pm @ Online via Zoom

Session 5: Pastoral Care in Prisons

Thursday 18 May, 6.45-9pm @ Online via Zoom

Session 6: Doing Pastoral Care Online and Remotely

Thursday 25 May, 6.45-9pm @ Online via Zoom

Optional Session (Joint with Ecology Group)
Pastoral Care, Climate Grief and The Role of Churches
Tuesday 23 May @ Online via Zoom

HALF TERM

Session 7: Home Visiting: Good Practice and Safeguarding
Thursday 8 June, 6.45-9pm @ Online via Zoom

Session 8: Dementia Awareness and Pastoral Care with the Elderly
Thursday 15 June, 6.45-9pm @ Online via Zoom

Session 9: Bereavement Care Awareness Training (Day Course)
Saturday 17 June, 10-2 @ St John's House, 155-163 The Rock, Bury BL9 0NE

Session 10: Pastoral Care with Children, Young People and Families
Thursday 22 June, 6.45-9pm @ Online via Zoom

Session 11: Spare Session (Topic to be Decided by Group)
Thursday 29 June, 6.45-9pm @ Online via Zoom

Session 12: Setting up and Supporting Pastoral Care Teams
Thursday 6 July, 6.45-9pm @ Online via Zoom

Session 13: Next Steps, Action Plans and Role Descriptions
Thursday 13 July, 6.45-9pm @ Online via Zoom

Tutors

For more information on the Pastoral Care elective please contact:



Revd Denise Owen
Vicar at St Thomas, Moorside

E: therevd.dowen@yahoo.co.uk

Going Deeper

If you would like to know a little bit more about this elective and what it will be covering then please feel free to check out the following books and resources:

Books

Joyce Huggett, Listening to Others

Mike Mitton, A Heart to Listen: Becoming a Listening Person in a Noisy World

Frank Wright , Pastoral Care Revisited

Alastair Campbell, Rediscovering Pastoral Care

Peter MacIntosh, Listening is Healing: A Practical Guide to Pastoral Care

Adrian Plass, Jesus: Safe Tender Extreme

Bob Whorton, Reflective Caring: Imaginative Listening to Pastoral Experience

Web Resources

Acorn Christian Healing Foundation: <https://acornchristian.org/>

Bereavement Care Awareness course: www.careforthefamily.org.uk/

Dementia Friends: <https://www.dementiafriends.org.uk/>

PASTORAL OUTREACH

Beth's ALM Story

Why I did the course

When my three children had all started school, I felt God was calling me into ministry within my church and community. I began to look for opportunities when the ALM course was brought to my attention. Looking at the different electives, I knew instantly pastoral listening and outreach was where God was calling me. At the time, the global pandemic was in its early months, but it was already clear that the effects of lockdown were creating a massive burden of uncertainty, anxiety, mental health problems and loneliness. I felt the need for pastoral support had never been greater.

How I found the course

The course was brilliant. It was mostly on-line, but the team and leaders adapted very competently, and we still managed to bond as a group. The core content was a good foundation in principles of lay ministry, and the mission vision of the diocese. It was good to lead the 5-minute worship slot, and the open and honest break out rooms were supportive and helpful. The variety of speakers from diverse ministries were brilliant. I finished each session feeling revived and ready to go out there and show Jesus' love.

What I've been doing since

I have taken on a newly created role in my church as 'Pastoral Care Co-ordinator.' This involves being one of a team who visits people in the church community who are going through a hard time and regularly meeting with different ministry teams within the church to see how we can improve pastoral support. It also includes planning new church-wide and community schemes with a focus on outreach and discipleship support.

My advice to those considering the course

If you have a heart for listening to people going through a tough time, and want to explore further training in pastoral care from a Christ-led perspective, then this is such a good course. The overall aim is to grow God's kingdom by equipping lay church members with the skills they need to encourage church growth, and if you feel excited about this work, then have a chat with your church leadership team and someone who has been on the course and pray about it!



Beth Hampson

Pastoral ALM at Christ Church, Pennington

PRAYER AND SPIRITUALITY

Learning Goals

- ♦ To develop and grow participants' own prayer life so that prayer becomes a way of living and being in the everyday stuff of life.
- ♦ To nurture a wider understanding of prayer through all its different styles, practices and traditions, including the practice of daily prayer journaling.
- ♦ To resource and equip participants so that they can confidently develop their own prayer ministry.
- ♦ To explore how prayer is missional and connects us with the work of God that is already at work in us and in our communities.

Course Delivery and Venues

The majority of the sessions will be delivered online via Zoom on a Wednesday evening. There will also be 3 Saturday sessions delivered in person with venues to be decided once we know the geographical location of participants.

Sessions

Session 1: Introduction to Prayer and Spirituality

Saturday 29 April, 10-1pm @ Venue tbc

Session 2: Resourcing Your Individual Prayer Life

Wednesday 3 May, 6.45-9pm @ Online via Zoom

Session 3: How to Pray With and For Others

Wednesday 10 May, 6.45-9pm @ Online Via Zoom

Session 4: Exploring Different Ways of Praying

Saturday 20 May, 10-3 @ Venue tbc

Session 5: Prayer Retreat in Daily Life

Wednesday 24 May @ Online via Zoom

HALF TERM

Session 6: Prayer for Wholeness & Healing

Wednesday 7 June, 6.45-9pm @ Online via Zoom

Session 7: Leading Corporate Prayer

Wednesday 14 June, 6.45-9pm @ Online via Zoom

Session 8: Planning Prayer Stations, Quiet Days & Retreats

Wednesday 21 June, 6.45-9pm @ Online via Zoom

Session 9: Inclusive Prayer including Disability Awareness

Wednesday 28 June, 6.45-9pm @ Online via Zoom

Session 10: Prayer and Spirituality with Children & Young People

Wednesday 05 July, 6.45-9pm @ Online via Zoom

Sessions 11&12: Putting Theory into Practice (Participant Workshop) Next Steps, Action Plans and Role Descriptions

Saturday 8 July, 10-3 @ Venue tbc

Additional Requirements

All course participants will be asked to keep a reflective prayer journal throughout the course. Guidance on this will be given and participants will not be asked to submit their prayer journal.

Tutors

For more information on the Prayer and Spirituality elective please contact:



Sheila Tolley

ALM at St James, East Crompton

E: sheilatolley32@gmail.com



Jennifer Tranter

Christ Church, Healey

E: jennifertranter1521@gmail.com



Kirsten Rutherford

Ordinand at Norden, Ashworth and Bamford (Benefice)

E: kirsten.rutherford@emmanueltc.org.uk

Going Deeper

If you would like to know a little bit more about this elective and what it will be covering then please feel free to check out the following books and resources:

Books

Stephen Cottrell, How to Pray: Alone, With Others, at Any Time, in Any Place

Margaret Silf, Landmarks: An Ignatian Journey

Evelyn Underhill, Evelyn Underhill's Prayer Book

Pete Grieg, How to Pray: A Simple Guide for Normal People

God on Mute: Engaging the Silence of Unanswered Prayer

Timothy Keller, Prayer: Experiencing Awe and Intimacy with God

Miranda Threlfall-Holmes, The Little Book of Prayer Experiments

Gerald O'Mahony, Finding the Still Point: Making Use of Moods

Websites & Apps

Pray As You Go: <https://pray-as-you-go.org>

Pathways to God: <https://pathwaystogod.org/>

Church of England, Service of Daily Prayer: <https://tinyurl.com/w8frb6r>

Northumbria Community (Daily Office): <https://www.northumbriacommunity.org/offices/how-to-use-daily-office/>

Lectio 365- Devotional Resource App: <https://www.24-7prayer.com/dailydevotional>

Sacred Space, Daily Guided Prayer: <https://www.sacredspace.ie/>

PRAYER and SPIRITUALITY

Angie's ALM Story

Why I did the course

I felt that the time was right to develop my commitment to the work of the parish and the wider church as I was nearing retirement from paid work. The Covid 19 pandemic has caused me to reflect and evaluate on what is important and a return to a simpler and more meaningful life. I had always felt some calling and this opportunity brought clarity to that. The course provided the time to study, listen, learn and participate through the course and become the next step on my Christian journey.

How I found the course

Each session focused on a different aspect of prayer and spirituality with lots of resources provided by the tutors who brought their experiences and ideas. It was exciting, inspiring and uplifting to share their knowledge and there was always an opportunity to ask questions and to clarify any uncertainties. The inbuilt retreat provided a time to stop, reflect and evaluate my prayer life and faith. I found it a deeply moving and profound experience that undoubtedly gave me strength and confidence. By the end of the course, I felt empowered, equipped and reassured that I would be able to do God's work in my parish.

What I've been doing since

I have started to be involved in the formation and development of new services as well as providing a Prayer Perceptions article for each issue of the Parish Newsletter. I am also developing different service formats, such as Celtic and Taize, and looking at how we can provide more prayer events such as a Prayer Festival and Quiet Days. Other ideas include community outreach activities, such as a nature walks, therapeutic art and virtual prayer for the housebound.

My advice to those considering the course

I felt trepidation and nervousness when I started to consider undertaking the ALM course but help, support and reassurance was very forthcoming from expected, (and unexpected), quarters! I soon began to realise that maybe I did have gifts that God could use in a new and exciting way. Believe in yourself – God will provide the reassurance, the tools and the certainty, through faith, that you need.



Angie Foster

Prayer and Spirituality ALM at Christ Church, Walmsley

URBAN AND ESTATES

Learning Goals

- ♦ To enable those living on urban estates or those with have a heart for urban estates to step out and engage in ministry within that context.
- ♦ To empower participants in a life stretching experience of growing as a disciple of Jesus.
- ♦ To equip and encourage participants with the skills and tools required to engage in a broad range of ministries within urban and estate contexts.

Course Delivery and Venues

This course will be delivered during the day, 10am-2pm, over 24 teaching weeks from January to July (term time only). The weekday will be selected based on what works best for the majority of participants. Venues will be based around the Antioch church plants of Oldhams Estate and Top o'th Brow which are both in Bolton. There will also be a two-day end of course residential at a diocesan retreat centre.

Sessions

The morning sessions consist of praise and worship, testimony time and a teaching slot. The afternoon sessions are focused on formation. Eating together plays a key part of the course, so lunch is always included.

Session 1: Introduction to Urban & Estates // Setting Project Goals

Session 2: Jesus 1 – The Bible // Learning Circle Model

Session 3: Jesus 2 – Theology // Semi-Circle (Pendulum) Model

Session 4: Jesus 3 – The Church // Triangle Model

Session 5: Old Testament 1 – Intro // Hurts, Habits & Hang-ups - Resilience

Session 6: Old Testament 2 – Pentateuch // Calling

Session 7: Old Testament 3 – History & Wisdom Literature // Personality Types

Session 8: Old Testament 4 – Prophets // Healing

Session 9: New Testament 1 – Introduction and Overview // Prophecy

Session 10: New Testament 2 – The Gospels // Mission – Cold Contact

Session 11: New Testament 3 – Acts // Spiritual Gifts

Session 12: New Testament 4 – Letters // Dealing with Conflict

Session 13: New Testament 5 – Revelation // Hot Potatoes

Session 14: Urban Ethics // Hot Potatoes

Session 15: Christian Practice 1 – Prayer // Workshop (Away Day)

Session 16: Christian Practice 2 – Silence, Solitude & Fasting (Away Day)

Session 17: Christian Practice 3 – Accountability // Workshop

Session 18: Christian Practice 4 – Personal Study // Workshop

Session 19: Christian Practice 5 – Giving // Leadership

Session 20: Theology 1 – Intro & Trinity // Leadership Square

Session 21: Theology 2 – Sin, Suffering & Salvation // Interfaith Witness

Session 22: Theology 3 – Church // APEST Exercise

Session 23: Mission Trip – Away Day

Session 24: End of Course Retreat // Commissioning (two days)

Additional Requirements

Project 1

Exploring what each participant wants to achieve during this course and then sharing this with the group.

Project 2

Each participant is invited to reflect on and then share their faith journey (personal testimony) with the rest of the group.

Project 3

As part of the final course retreat, participants are asked to share what they have learnt over the course and where they feel God is calling them next.

Important Information

This elective combines the Core Leadership Module as part of its main teaching sessions, so this module does not need to be completed separately.

In addition to the standard application process, all applicants for this elective will also be invited to have an informal phone conversation with a Course Tutor prior to being offered a place on the course.

Tutors

For more information on the Urban and Estates elective please contact:



Revd Lee Higson

Pioneer Curate (Antioch Network)

E: revleehigson@gmail.com



Jenny Garland

Authorised Lay Minister & Recovery Group Leader

E: mothermoney@live.com

Going Deeper

If you would like to know a little bit more about this elective and what it will be covering then please feel free to check out the following books and resources:

Books

Chris Lane, Not Forgotten

Chris Lane, Ordinary Miracles

Mez McConnell, The Least, the Last & the Lost

Mez McConnell, Church in Hard Places

Tim Chester, Unreached: Growing Churches In Working-Class & Deprived Areas

Web Resources

National Estate Churches Network: <https://estatechurches.org/>

Antioch Network, Manchester Diocese: <https://www.antiochnetwork.org.uk/>

National Estate Churches Directory: <https://estatechurches.org/necn-directory/>

URBAN and ESTATES

Amanda's ALM Story

Why I did the course

God really put on my heart a passion to work with and minister to people on urban estates. As part of this, I wanted to gain a deeper understanding of my own faith and to learn new skills that would help me to reach out and grow the faith of others on my estate.

How I found the course

The sessions were amazing – we would have worship, sharing stories, then teaching in the morning, have lunch, and then do some formation. Having the opportunity to be with other like-minded people each week was a blessing. We were able to share and encourage each other in all areas of discipleship. There was something special about eating together each week and having fellowship. Under the amazing guidance of our course tutors and guest speakers, we dived deeply in to the Bible, explored some 'hot potato' topics and shared the questions we each had burning inside knowing it was a safe place to air our own thoughts without judgement.

What I've been doing since

I'm now engaged in children's work, youth work and outreach on the estate as well as getting more involved at the local school. The course really taught me how we can come alongside others, offering them love and support whilst also sharing the amazing truths and good news about Jesus. I am also actively involved in our church plant on the estate where people can bring their problems and struggles knowing that they will be welcomed and supported without judgement or fear. We don't have our own church building, so we meet in each others homes and in the local community centre. We hope this breaks down some of the historical barriers and images that people might have about the church.

My advice to those considering the course

I would highly recommend this course to anyone who has a heart for urban and estates ministry, regardless of whether they live on an estate or not. This course will also really encourage and empower you to explore your own faith more deeply as you grow as a disciple of Jesus.



Amanda Chapman

Urban & Estates and Children's Ministry ALM at Oldhams Church, Bolton

WORSHIP AND LITURGY

Learning Goals

- ♦ To explore the breadth and depth of Christian worship, from its biblical roots through to modern day expressions.
- ♦ To reflect on worship as our primary purpose and work as human beings.
- ♦ To gain practical knowledge around different styles of worship - liturgical, pastoral, evangelistic, contemplative, all age etc.
- ♦ To build confidence and equip participants in understanding, creating and leading appropriate acts of worship within their own churches and local contexts.

Course Delivery and Venues

Most sessions will be delivered on a Wednesday evening either in person or online via Zoom. There will also be 3 Saturday sessions. The venues used will be St Andrew's Church, St Andrew's Road, Radcliffe M26 4HU and St John's House, 155-163 The Rock, Bury BL9 0NE.

Sessions

Sessions 1 & 2: Worship and Biblical Context

Saturday 22 April, 10-3pm @ St Andrew's Church, Radcliffe

Session 3: Anglican Liturgy and the Seasons

Wednesday 26 April, 7-9pm @ Online via Zoom

Session 4: All Age Worship

Wednesday 03 May, 7-9pm @ St John's House, 155-163 The Rock, Bury BL9 0NE

Sessions 5 & 6: The Ministry of the Word and Special Services

Saturday 13 May, 10-3pm @ St Andrew's Church, Radcliffe

Session 7: Using Music and Songs

Wednesday 17 May, 7-9pm @ Online via Zoom

Session 8: Practical Tips for Leading Well

Wednesday 24 May, 7-9pm @ St Andrew's Church, Radcliffe

HALF TERM

Session 9: Online Worship

Wednesday 07 June, 7-9pm @ Online via Zoom

Session 10: Ecology, Creation and Worship

Wednesday 07 June, 7-9pm @ Online via Zoom

Sessions 11 & 12: Reflections, Next Steps and Future Plans

Saturday 24 June, 10-3pm @ St Andrew's Church, Radcliffe

Additional Requirements

Throughout the course we encourage participants to visit each others parishes to experience and reflect on different types of worship. Participants will also be invited towards the end of the course to create and submit an Order of Service for a special service of their choosing as part of feedback and ongoing development.

Tutors

For more information on the Worship and Liturgy elective please contact:



Revd Jo McKee

Incumbent at Radcliffe, St Andrew (Benefice)

E: revjomckee@outlook.com



Ian Banks

Reader at Bury, Walmersley Road (Benefice)

E: ian.banks@sgkinc.com

Important Information

It is very important when applying for this elective that the applicant, supporting incumbent and the sponsoring parish are well aware of the distinct but complimentary nature of authorised lay worship leaders and Licensed Lay Ministers /Readers. For more information on this please see the [ALM Handbook for Clergy & PCCs](#).

Going Deeper

If you would like to know a little bit more about this elective and what it will be covering then please feel free to check out the following books and resources:

Books

Mark Eary, Liturgical Worship: A Basic Introduction

Producing Your Own Orders of Service

Common Worship Today - An Illustrated Guide

Richard Giles, Times and Seasons: Creating Transformative Worship

Creating Uncommon Worship: Transforming the Liturgy of Eucharist

Peter Moger, Crafting Common Worship: Practical, Creative Guide to What's Possible

Paul Thomas, Using the Book of Common Prayer: A Simple Guide

Samuel Wells, Liturgy on the Edge

Pete Ward, Selling Worship: How What We Sing Has Changed the Church

Nick Page, And Now Let's Move into a Time of Nonsense: Why Worship Songs are Failing the Church

Grove Booklets

Ian Tarrant, Worship and Freedom in the Church of England: Exploring the Boundaries

Chris Leach, How to Plan and Lead All-Age Worship

More Grove Booklets on worship: <https://grovebooks.co.uk/collections/worship>

Web Resources

Church of England, Common Worship: <https://tinyurl.com/y2gv2coq>

Book of Common Prayer: <https://tinyurl.com/y287st42>

New Patterns for Worship: <https://tinyurl.com/yg7q9w4f>

Celtic Christianity (Northumbria Community): www.northumbriacommunity.org

All Age Worship Resources : <https://www.allageworshipresources.org>

<https://engageworship.org/>

WORSHIP and LITURGY

Paul's ALM Story

Why I did the course

I was asked to think about applying for the Foundations for Ministry course, which I did. Part of the course involved an informal chat with your vicar, to see how things were going, and to explore what the next steps of your spiritual journey might be. He suggested the ALM with worship and liturgy, with the intention that I would join the team that leads worship at our church. Although I had not considered this, I am glad he highlighted it, as it turned out to be a most encouraging and enjoyable course.

How I found the course

I found the course very engaging. All the tutors were knowledgeable, friendly and helpful, creating a relaxed, orderly and safe atmosphere where people felt comfortable contributing in the discussion groups. The course was very comprehensive addressing: aspects of leadership, sustainability in ministry, to the history and context of Anglican worship, as well as looking at the practical side of planning different types of worship. Getting to know and interact with new people was also very rewarding. The course changed my view of worship and, in a gentle way, made me aware of the responsibilities of leading worship in church.

What I've been doing since

As part of my ALM role, I have joined the team of lay, licensed and ordained leaders of our corporate worship at Christ Church. We have had one training session on leading services at Christ Church which reinforced many of the principles I had learnt on the ALM course. I now have a mentor and a date later this year to lead my first Sunday morning service.

My advice to those considering the course

I would suggest starting some daily readings, something easy, to give God the chance to speak to you when you are on your own. Then, I would enthusiastically embrace this course and see where God leads you. There will be plenty of friendly advice and helpful support from the tutors.



Paul Rigby

Worship ALM at Christ Church, Walshaw

YOUTH WORK

Important Information

In previous years we have taught the children's and youth elective courses separately, however this year we are looking to deliver core content appropriate for both children's and youth leaders, along with separate sessions that cover more specific training for the distinctive age ranges.

Learning Goals

- ♦ To explore and learn more about the social development of children and young people and its impact on our ministry and work with them.
- ♦ To explore and understand some of the key principles of relational children's and youth work so that participants can contextualise these to their local parishes, projects and communities.
- ♦ To make space for participants to dream and get excited about potential programmes of children's and youth work applicable to their context, and then be able to identify key resources that would enable them to develop and deliver these.
- ♦ To equip and train participants in specialist 'bolt on' areas of children's and youth work, such as mental health, messy church, faith development and schools work.
- ♦ To ensure that all participants are up to date with current guidelines and best practice in youth and children's' work.
- ♦ To equip participants in rethinking their contextual approach to the 'departure' after confirmation and secured secondary school places.

Course Delivery and Venues

Due to the new structure of this dual elective we will be delivering the sessions across one weekend. Dates and venue for this weekend will be confirmed soon but are likely to be during April/May 2023.

This will create space to learn together and also the opportunity to meet in separate elective groups too. A weekend also creates opportunities to share experiences, resources and best practice with others attending.

There will also be 2 additional evening meetings, one prior to the weekend and one after the weekend with dates and venues tbc.

Tutor

We are welcoming our new Children's Officer at the beginning of December and shortly after that time we will be able to release a detailed overview of the course content. This will include both the joint teaching content and the specific elective course content.

In the meantime, for more information elective please contact:



Canon Susie Mapledoram
Diocesan Youth Work Officer

E: SusieMapledoram@manchester.anglican.org

Going Deeper

If you would like to know a little bit more about this elective and what it will be covering then please feel free to check out the following books and resources:

Films

Juno

Books

Doug Fields , Your First Two Years of Youth Ministry

Kenda Creasy Dean , Almost Christian

Kenda Creasy Dean, Starting Right: Thinking Theologically about Youth Ministry

Andrew Root, Revisiting Relational Youth Ministry

Sara Savage, Sylvia Collins-Mayo, Bob Mayo and Graham Cray, Making Sense of Generation Y

Grove Booklets Youth Series: <https://grovebooks.co.uk/search?q=youth>

Important Information

In addition to the standard application process, all applicants for this elective will also be invited to have an informal phone conversation with the Course Tutor prior to being offered a place on the course.

YOUTH WORK

Paul's ALM Story

Why I did the course

I had been involved as a volunteer youth worker at St Aiden's for a while but as my faith grew I wanted to get more officially involved in the life of the church. Over the past few years my life has gone through some significant changes, all good, including completing the diocesan Foundations for Ministry course. After the course, key people in the parish began to help me discern my vocation and explore possibilities for the future. It was eventually agreed that the Youth Ministry elective would best prepare me to be able to play more of a key role in the development and delivery of the parishes youth work and outreach programmes.

How I found the course

If you go in with your eyes open there is so much you can learn on this course. There are so many different ways that churches can do youth work and I got so many new ideas, tips and resources to take back and try at my church. I also met some really nice people to share ideas with so that we can learn together and encourage each other in the work that we are all doing. Doing the elective has really helped me grow in confidence and I now feel much more skilled and equipped to go back in to the parish and try new things.

What I've been doing since

As an ALM and new member of the PCC I now have a leading responsibility in the parish to work alongside others in developing our youth programmes and outreach. The parish is currently at a crucial point with this having just been awarded a 3 year grant from the Council for Social Aid. I am already involved with co-ordinating Sunday School, Messy Church and the churches' Monday Club which is a youth club for primary aged kids in the area. Moving forwards I will also be playing a key role in the Lower Kersal Young People and Community Group that operates out of the church. This will include running allotment projects, drama projects, substance awareness programmes, first aid courses and all sorts of other new and exciting things...I can't wait!!!

My advice to those considering the course

Go in open to learning new things and enjoy it as much as you can because it goes fast! I have grown in so many ways through doing the elective and you will too!!



Paul Tombling

Youth Work ALM at St Aidan's, Lower Kersal

FREQUENTLY ASKED QUESTIONS

Does the training involve any assignments, tests or exams?

There are no assignments, tests or exams on the ALM courses. There is a limited amount of written work that is optional between sessions, but the ethos of the course is more focused on group discussions, reflective practice and real life application. However, for those wanting to take things deeper there will always be suggestions for further reading, resources and ongoing development.

How much does the training cost?

All the costs of ALM training are met by the diocese but parishes are expected to support their candidates if help is required with basic costs such as travel expenses. Where finances are a barrier to participation, parishes are encouraged to contact the Local Ministry Officer for further advice and support.

Does the training have an age limit?

An ALM needs to be 18 or over at the time of authorisation, an “adult” in legal terms, or have special permission from the Bishop. There is no upper age limit.

How many ministry electives can an ALM do?

Post initial training, ALMs are free to train in any number of related ministry electives. Further elective training involves a light touch application process but still requires approval from the PCC and an updated Ministry Role Description if the ALM is to be authorised in a new or additional ministry area. If an ALM is not seeking to be authorised in a new ministry area and is doing the course as part of general ongoing training and development, then an updated Ministry Role Description is not required and a certificate of course attendance will be issued instead.

Once trained, how long does an ALM’s authorisation last for?

ALMs are authorised for a period of 3 years. After this time the parish must apply for the ALM to be re-authorised for a further three years. This will then continue on a rolling cycle.

Can a parish nominate a candidate for ALM during a vacancy?

A parish in vacancy may nominate a candidate for ALM as long as it can be shown that the parish context is stable enough and that all involved will have a sufficient level of ministerial support and oversight. In such instances, the Churchwarden should complete the application process with the candidate and have this overseen by a Team Rector or Archdeacon before then being taken to the PCC for approval.

Do ALMs have to be confirmed?

Generally, confirmation has been understood to be the gateway to Anglican ministry. In recent years, the admission of children to Communion before Confirmation, and the receiving into membership of those who were baptised and brought up in another denomination has meant that there is less clarity on the place of confirmation in the Church of England. In this context, those being nominated for ALM should generally either be confirmed, or in the process.

Who is responsible for ALMs DBS checks?

As for other unlicensed church officers, it is the responsibility of the ALM's parish and PCC to ensure that his or her DBS check is completed and kept up-to-date. The possession of an up-to-date DBS check (i.e. within the last 3 years) must be confirmed at the time of initial authorisation and subsequently at each 3-year reauthorisation.

Who is responsible for ALMs safeguarding training?

ALM's are required to undertake safeguarding training to foundation level. This is available as an on-line course, but will be delivered in person as part of any initial ALM training. Following initial training, it is the responsibility of the ALM's parish and PCC to ensure that his or her safeguarding training is kept up-to date. The possession of an up-to-date safeguarding certificate (i.e. within the last 3 years) must be confirmed at each 3-year reauthorisation.

Can an ALM transfer to another parish?

If an ALM moves parish they can seek the support of their new incumbent and PCC to apply for a transfer of their authorisation. In such cases, the individual must first have become settled as a worshipping member of the new church for at least six months. The transfer must also involve the mutual creation of a new ALM Ministerial Role Description that aligns the ministry of the ALM with the wider mission and goals of the parish MAP.

Can an ALM work across multiple parishes?

Where it has been discerned to be appropriate to the local context, an ALM can work across multiple parishes in a benefice, team, partnership, mission community etc, so long as a clear ALM Ministry Role Description has been formed and signed off by all PCCs involved.

HOW TO APPLY

Further Information

Application Forms

Further information and details on how to apply can be found on the diocesan website. Please note that there is a separate application process for new ALMs and for current ALMs applying to do further training.

www.manchester.anglican.org/lay-ministries/ALM/

Further Information

For further information and details on the ALM course or any other matters relating to lay training and development, please contact:



Jamie Mackenzie
Local Ministry Officer

Mobile: 07553 374 130

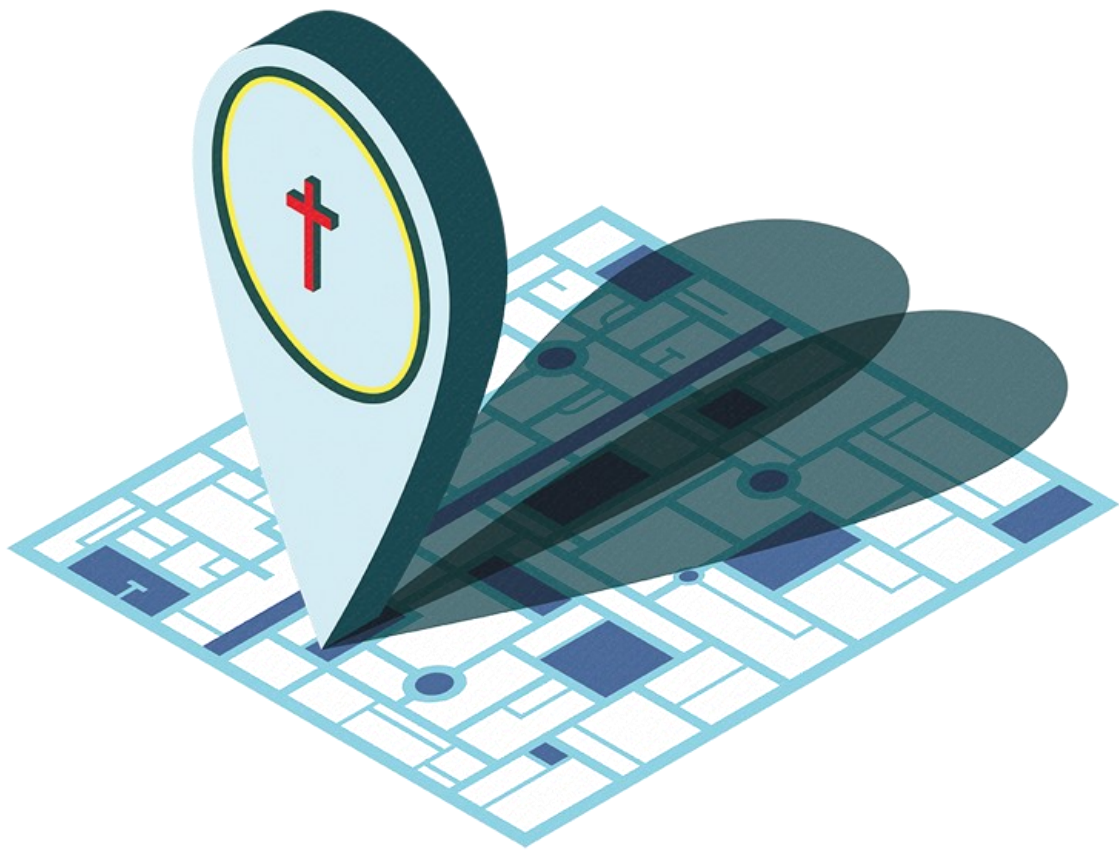
Email: jamiemackenzie@manchester.anglican.org

Application Closing Dates

The final closing dates for 2023 course applications are:

New ALM Applications: **Sunday 8 January 2023**

Existing ALMs applying for further training: **Sunday 12 March 2023**



OUR VISION

*To be a worshiping, growing and transforming
Christian presence at the heart of every community.*